

TRAVERS

NEW YORK



CENTRAL PARK | Collection 2020

The Travers design aesthetic has long been inspired by a New York state of mind. The CENTRAL PARK collection draws inspiration from the rich history behind this famed park. In the mid-1800s, the city of New York held a competition to select the architect and landscape designers who would transform the land between the Upper East and West Sides of Manhattan. The 'Greensward Plan' was the winning proposal by Frederick Law Olmstead. Aptly named, the GREENSWARD BOUQUET is a work of art. A multi-coloured floral with an oversized scale, it has distressed detailing which makes it reminiscent of an antique fresco. CENTRAL PARK TOILE is the star of the collection. A contemporary update on an old classic, it is impeccably embroidered and illustrates finely detailed vignettes of Central Park. The collection integrates old world weaving techniques found in GRACIE LAMPAS and BOSQUE MOIRE; these processes have been passed down by skilled artisans for many generations. CENTRAL PARK is full of sophistication and grace and its elegant designs are offered in a colourful yet refined palette, bringing the charm of this renowned park indoors.

BY ZIMMER + ROHDE

TR AVERS

NEW YORK

CENTRAL PARK | Collection 2020

Greensward Bouquet | 44164

3 Colourways

100% LI

Width: 145 cm

Usable width: 133 cm



Named for the 'Greensward Plan', Frederick Law Olmstead's winning proposal for the creation of Central Park, GREENSWARD BOUQUET is a collection highlight. The inspiration for it came from an old document purchased long ago, which was then redeveloped and painted by hand. An oversized scale combined with distressed detailing gives GREENSWARD BOUQUET an antique feel reminiscent of a fresco painting. Printed on a 100 per cent linen base cloth, over 30 colours are used to create each of the three available colorations.

Central Park Toile | 44165

4 Colourways

60% CO, 40% LI

Embroidery: 100% PES

Width: 145 cm

Usable width: 130 cm



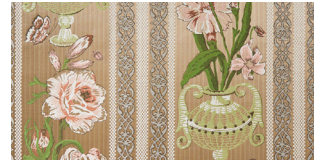
CENTRAL PARK TOILE will stop you in your tracks! Attention to detail is poured into every stitch of this embroidered adaptation of an original pen and paper drawing. We used a very fine, short embroidery stitch technique on a linen and cotton base cloth to recreate classic Central Park scenes. Vignettes include Bethesda Fountain, Belvedere Castle, a view from the reservoir of the luxury San Remo apartment, a paddle boat from the famed Boathouse and of course New York's iconic tree-lined Central Park Mall. Available in four colours, this toile is truly one of a kind.

Gracie Lampas | 44166

2 Colourways

72% CV, 28% PA

Width: 140 cm



Named for Gracie Mansion on the Upper East Side of Manhattan, the design for GRACIE LAMPAS was adapted from a historic print found in the Travers design archive. Woven on traditional Italian looms, a subtle strié is formed in the base using two nylon warp tones. There are six dense colours in the weft, which mix together to produce a beautiful multi-coloured result. A softened finish gives GRACIE LAMPAS a beautiful drape and gentle touch. Offered in two exquisite colorations, this lampas is available in a rich jade jewel tone, and a soft blush neutral.

Beresford | 44167

4 Colourways

51% LI, 21% PES, 17% CO,

9% CV, 2% CLF

Width: 280 cm



BERESFORD is named after one of the most prestigious residential addresses in Manhattan overlooking Central Park, which was once a hotel of the same name. The fil-coupé design was inspired by an older traditional style, which has been interpreted for the modern day. A very special mixed warp is used, resulting in a beautiful melange effect found in the base. The finishing is soft and natural, giving it an outstanding drape. BERESFORD is a double-width sheer to be used railroaded.

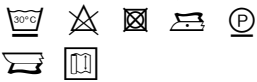
TR AVERS

NEW YORK

Olmstead | 44168

5 Colourways
75% PES, 15% LI,
8% CV, 2% CLY

Width: 298 cm

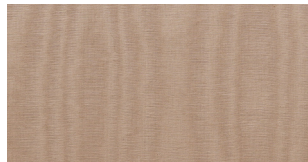


OLMSTEAD is an octagonal trellis aptly named for Frederick Law Olmstead, the landscape architect responsible for the inception of Central Park. This double-width fil-coupé trellis is first fully woven before being individually piece dyed. Woven on a mixed warp, each fibre takes colour differently, making the melange effect in the base more apparent. Shown railroaded, OLMSTEAD has a soft finishing and is offered in a crisp white, creamy ivory, soft sky blue and dove grey.

Bosque Moire | 44169

6 Colourways
100% CO

Width: 140 cm



The craftsmanship involved in creating BOSQUE MOIRE is passed down from generations before. The warp and weft are first yarn dyed and then woven to create a subtle ottoman weave effect. The fabric is then fed through cylinders that determine and press the moiré pattern onto the cloth, ensuing in an incredibly elegant, organic pattern. BOSQUE MOIRE is available in six colours, from pale ivory and oyster, to soft blush and sky, finishing with a dusty patina and rich emerald.

Gramercy | 44170

6 Colourways
70% CO, 30% LI
Width: 140 cm



Named after New York's most famous private park, GRAMERCY is a casual 100 per cent natural drapery. The broken lattice was created with intentional breaks in the design to produce a distressed and rustic feel. It is lightweight and drapes easily, offered in a range of six colours. GRAMERCY can be used individually or as an excellent layering piece.

TRAVERS

NEW YORK



OUT OF AFRICA | Collection 2020

Be prepared to go on a Safari for your senses with our newest Travers collection. Rich in colour, texture and technique, OUT OF AFRICA taps into a desire to create environments that are simultaneously sophisticated and playful. Arrays of stylish neutrals are found across the collection, ranging from warm sand and golden hues, to cooler silvery greys and soft black. Shots of colour are infused throughout, including a wide range of blues and hints of teal, green and terracotta. OUT OF AFRICA shines a spotlight on jungle animals, starting with SAMBURU, a soft jacquard upholstery fabric, a play on the classic leopard skin. Followed quite literally with SINGITA PARADE, a fantastic elephant print with a subtle metallic outline, and SAFARA EMBROIDERY, which artfully details scenes one would find on a game drive through the African bush. In keeping with Travers' pursuit to offer a comprehensive range, OUT OF AFRICA features well-crafted multipurpose embroideries, a variety of printing techniques, sheer drapery and durable upholstery fabrics. This collection brings a well-travelled, subtle serenity into your home, so sit back and enjoy the ride.

BY ZIMMER + ROHDE

TRAVERS

NEW YORK

OUT OF AFRICA | Collection 2020

Cape Floral | 44154

4 Colourways

90% CO, 10% LI

Width: 149 cm

Usable width: 142 cm



CAPE FLORAL is a nod to the magnificent Cape Floral Region in Southern Africa, one of the world's most diverse floral areas. Comprised of over 20 colours, this design is digitally printed on a structured cotton-linen base cloth. The density of the pattern is offset by a subtle leaf silhouette which sits recessed in the background. CAPE FLORAL is offered in four gorgeous colorations, including a rich warm neutral with Saharan camels, taupe and terracotta and a bold peacock-inspired colourway with deep emerald, leafy green, navy and periwinkle.

Kudu Chevron | 44156

3 Colourways

64% LI, 36% CO

Width: 145 cm

Usable width: 140 cm



KUDU CHEVRON is another design resurrected from the Travers archive. This playful screen printed chevron dances across the fabric, like a herd of Kudu galloping through the woodland. Comprised of two colours, the thicker chevron line is printed first, with the thinner line placed directly on top. Printed on a blended cotton and linen cloth, the density of the pigment dye is very important for the design to be successful.

Singita Parade | 44155

4 Colourways

100% CO

Width: 157 cm

Usable width: 145 cm



SINGITA PARADE is named after the famed safari lodge in South Africa which is host to many elephant herds. This design originated from the Travers archive and has been reintroduced as a traditional screen print. From afar it may appear to be an all-over organic design, but as you move closer, the playful elephants come into focus. Printed on a very fine 100 per cent cotton cloth, this design requires a very patient printing process. First the rarity of the line work inside the elephants is printed by fine pigment. Then, in order for the metallic outline to stay together, the printer must wait for the ink on the fabric to fully dry before printing. Offered in its documentary coloration with Gold and Black, SINGITA PARADE is also available in Champagne and Taupe, Bronze and Green and Silver and Blue.

Safara Embroidery | 44157

2 Colourways

55% LI, 45% CO

Embroidery: 100% PES

Width: 148 cm

Usable width: 130 cm



SAFARA EMBROIDERY expertly brings to life scenes you would find on a typical drive through the African bush. Using a special embroidery technique called the 'E-stitch', we are able to achieve very dimensional and detailed adaptations. The safari scenes include a lazy leopard perched atop a tree, a lion posing proudly on top of a rock and a mother and baby elephant grazing in the wild. Two neutral colourways are available, a paler combination on an ivory base, and a richer version on a natural base.

TR AVERS

NEW YORK

Sabi Sabi | 44158

3 Colourways

60% LI, 40% CO

Embroidery: 80% PES, 20% CV

Width: 137 cm

Usable width: 126 cm



SABI SABI is a unique and modern chevron design using a mix of matte and shiny yarns. The stitches were intentionally patterned like a box, made longer than usual to evoke a feel similar to a kilim weave. 'Sabi' means fear or danger in the African Tsonga dialect, which is appropriately fitting for this bold, strong design.

Victoria | 44159

4 Colourways

46% LI, 43% PES,

8% CV, 3% CLF

Width: 300 cm



VICTORIA is named for the world-famous Victoria Falls in Zimbabwe. Using a micro fancy yarn, the railroaded stripe is reminiscent of falling water. A beautiful melange effect in the base is created using a very special mixed warp. With a soft finish, this double-width sheer has an ease to its natural drape. VICTORIA is so versatile, it fits perfectly in both the big city and in the countryside.

Maasai Mara | 44160

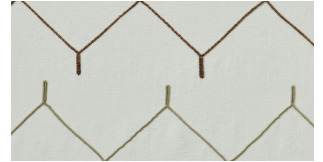
3 Colourways

56% LI, 44% CO

Embroidery: 100% WO

Width: 137 cm

Usable width: 130 cm



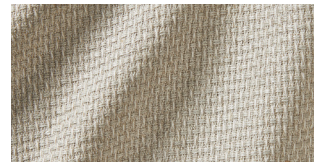
This exceptional rustic chevron design has dimension and movement running throughout the fabric. A very special technique is used, where three different coloured wool yarns are live-spun into a single cord and then a skilled artisan hand guides the embroidery machine. MAASAI MARA is named for one of Africa's top protected wildlife destinations in Kenya's flagship conservation area.

Barabara | 44161

5 Colourways

70% LI, 20% PES, 10% CV

Width: 140 cm



BARABARA is a subtle yet rustic horizontal stripe named after the Swahili term for road. A very natural look is achieved using a mixed premium linen yarn combined with a twisted fancy yarn. Offered in a range of neutrals and blues, this lightweight drapery is a perfect accent to every room.

TR AVERS

NEW YORK

Zamma | 44162

7 Colourways

40% CV, 40% CO, 20% PES

Width: 140 cm

Martindale: 33.000



This classic upholstery fabric has a varying checkerboard chenille design which perfectly complements many of the more decorative qualities in the collection. ZAMMA is named for the African board game that many believe is an ancestor to the modern game of checkers. It is available in seven colours, which include a wide range of neutrals, aqua and blue.

Samburu | 44163

3 Colourways

66% CV, 19% PA,

9% CO, 6% PES

Width: 138 cm

Martindale: 30.000



SAMBURU is a versatile animal-inspired upholstery design named for the Samburu National Reserve in Kenya, aptly home to all three big cats: the lion, cheetah and leopard. This is an especially tactile jacquard, woven on a high density warp which allows for a luxurious satin surface in the base. The sheen of the satin is offset by plush chenille expanses, finished with a softening for optimum feel. This upholstery design is available in three elegant neutral colour combinations.