



ZIMMER+ROHDE



Wonderland | Collection Spring 2019

The collection is an homage to mythical places, fairy-tale dream worlds and the magic of the future. But instead of seeking inspiration from literature, such as the fantastical worlds portrayed in 'Alice in Wonderland', we have chosen to focus on the magic of everyday life – from real paradises, to the magical artefacts of old, right through to the mystical adventures that new technologies have enabled us to experience. *Wonderland* is like a stroll through the gardens of imagination allowing us to experience a magic of different cultures.

Magical Gardens serves as a guide for uncovering the idylls hidden in our natural environment. The *Wonderland* decorative fabric, which depicts a mythical landscape, where dragonflies pitch on reeds and delicate flowers are nestled together on country meadows, is the centrepiece of the collection. Its printing technique accentuates the vibrancy of the pattern and grass looks as if it is gently swaying in a light summer breeze. *Coral*, by contrast, evokes the depths of the sea and its phenomenal flora and fauna, where sunlight is refracted into infinite shades of green and blue. This softly draping transparent fabric portrays the range of colours you would experience if you were to dive head first into the water. Artist's Studio is dedicated to the power of imagination and creativity. It takes inspiration from artists who open up new worlds to those who view their visionary works and inject new colours into their everyday lives. For example, *Mixed Media*, with its abstract chequered pattern, is reminiscent of

a painting by Mark Rothko, who used his artwork to transform how colour and space are perceived.

Fascination Craftmanship pays homage to historical artisan-ship, taking cues from cabinets of curiosity. These collections, which were popular during the Renaissance, showcased exotic artefacts and natural phenomena from around the world. *Kasai*, by contrast, is a bold, geometric embroidery on a natural, linen background. This pattern can be used to create a high-contrast, playful effect, like traditional African wax prints, or an elegant tone-on-tone aesthetic, like modern Scandinavian patterns.

Perfect Performance, on the other hand, paves the way to the future. Intelligent textiles are a marvel of technical innovation. They optimise the acoustics, climate and light intensity in a room, without losing any of their impact on design. *Sonic* is one of three acoustics-enhancing fabrics in the collection. Alongside its sound-absorbing function, it stands out because of its unique mesh look. *Curacao*, in turn, belongs to a new generation of multifunctional fabrics that can be used either indoors or outdoors. This all-rounder in a clear, vibrant striped pattern accentuates any living space, whether it is used to decorate a patio, bathroom, bedroom or conservatory.

No matter where you search for your wonderland, it will always be nearby. Don't just sit around and wait for a white rabbit to follow – set out on your own adventure.



ZIMMER+ROHDE

Wonderland | Collection Spring 2019

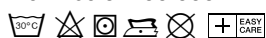
Talent | 10787

27 Colourways

100 % Polyester

Width: 145 cm

Martindale: 100.000



Talent, which has a casual, sporty tweed look, can be obtained in a comprehensive range of colours produced with modern natural dyes. It is also very hard-wearing and easy to clean, to withstand the bustle of family life – traces of chocolatey hands or spilt red wine are easily dealt with.

Moji | 10790

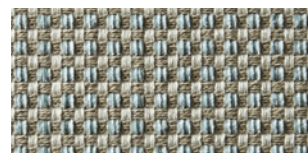
24 Colourways

65% Cotton, 20 % Polyester,

15 % Acrylic

Width: 144 cm

Martindale: 65.000



With its clear, architectural structure, but a soft, homely feel, *Moji* is an uncomplicated and hard-wearing furnishing fabric. The comprehensive range of colours offers a wide variety of options for a casual yet timeless furnishing style.

Salone | 10788

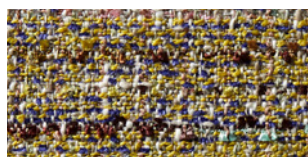
10 Colourways

40 % Acrylic, 40 % Cotton,

10 % Polyester, 10 % Viscose

Width: 140 cm

Martindale: 85.000



This fine-quality upholstery fabric in a timeless Chanel look uses a combination of different effect yarns to create a distinctive play on colours and textures.

Yasar | 10789

11 Colourways

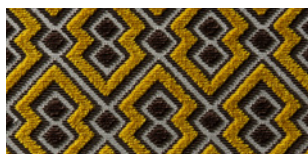
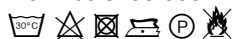
Ground: 100 % Polyester FR

Flor: 100 % Polyester FR

Width: 145 cm

Usable Width: 139 cm

Martindale: 60.000



The impressive textiles of the African Shoowa people served as the inspiration for this decorative velvet design. It meets the demands of furnishing today in every possible way. This fabric comes in a range of striking colours, from bright to elegant; it is hard-wearing and flame-resistant, and is equally suited to private homes and hotels or restaurants.

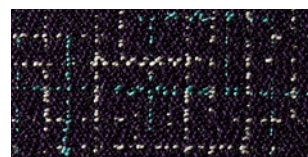
Infinity Criss-Cross | 10791

21 Colourways

69 % Acrylic, 31 % Polyester

Width: 148 cm

Martindale: 65.000



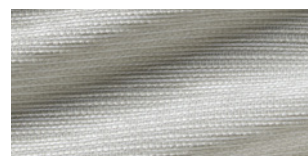
Infinity Criss-Cross is the contemporary interpretation of a mid-century design. Fine lines cross each other playfully in both directions on a structured background. This subtly multicoloured pattern adds liveliness to the hard-wearing all-over design, which can be used to great effect even on larger areas of upholstery. *Infinity Criss-Cross*, like all *Infinity* varieties, is washable, easy to clean, hard-wearing and extremely light-fast. This high-tech Jacquard weave is available in colours that match those of the single-colour fabrics in our *Infinity* product line.

Mondo | 10793

14 Colourways

100 % Polyester CS

Width: 310 cm



Mondo is a versatile, single-colour woven fabric with a horizontal flamé effect. This flame-retardant, softly flowing inbetween brings a homely atmosphere to both private and public spheres.



ZIMMER+ROHDE

Kasba | 10794

5 Colourways
84 % Cotton, 15 % Polyester,
1 % Polyamide
Width: 140cm



Kasba is inspired by the native origins of traditional North African handweaving. The use of irregularly spun flamé yarns gives it a natural, handcrafted character. Metallic touches add an elegant yet modern twist.

Linn | 10797

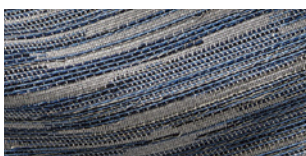
15 Colourways
74 % Linen, 26 % Polyester
Width: 320 cm



This softly flowing linen weave simply begs to be touched!
Linn softens the light and brings a natural, relaxed atmosphere to the window and into the room.

Tatami | 10795

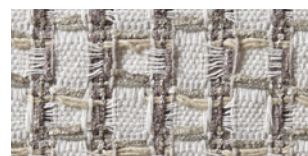
18 Colourways
45 % Polyester, 35 % Cotton,
15 % Linen, 5 % Acrylic
Width: 142 cm



Tatami is the perfect balance between naturalness, craftsmanship and elegance. Boasting a composition of matt and subtly shimmering, smooth and strongly textured yarns, a highly expressive Jacquard weave has been developed that brings out the best in every one of its components. The generous range of colours offers elegant nuances, neutral shades from light to dark and more strident hues.

Fes | 10798

5 Colourways
50 % Cotton, 45 % Viscose,
5 % Polyamide
Width: 136 cm



Haute couture for interior design. *Fes* combines the naturalness of a handwoven fabric with urban elegance; it is inspired by the striking fabrics of the great fashion houses. With its loosely woven waffle texture, *Fes* also brings the careless nonchalance of the Roaring Twenties to the modern window.

Sinter | 10796

4 Colourways
58 % Cotton, 27 % Acetate,
15 % Linen
Width: 315 cm



For *Sinter*, a special jersey yarn has been created whose unusual manufacturing process has resulted in a unique fabric for the true aficionado. A special weaving technique, along with a host of finishing processes, lend the horizontal relief its unmistakable character. Perfect at the window, or as a casual bedspread.

Mixed Media | 10799

5 Colourways
39 % Cotton, 33 % Viscose,
28 % Polyester
Width: 140 cm



Mixed Media, with its abstract chequered pattern, is reminiscent of a painting by Mark Rothko, who used his artwork to transform how colour and space were perceived. This is self-assured patterning with an artistic elegance, which plays with colour in combination with matte and glossy effects.



ZIMMER+ROHDE

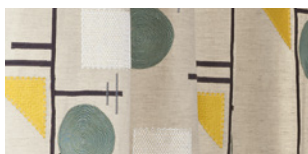
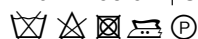
Zagora | 10804

4 Colourways

Ground: 60 % Linen, 40 % Cotton

Embroidery: 45 % Linen,
40 % Cotton, 7 % Polyester,
7 % Viscose, 1 % Polyamide

Width: 150 cm | Usable Width: 134 cm



The ethnic-inspired geometry of this intricate embroidery simultaneously evokes the stylistic idiom of the BAUHAUS era, for the great designers of that age also loved to take inspiration from the indigenous beauty of ancient cultures.

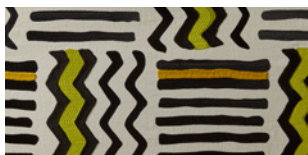
Kasai | 10806

3 Colourways

Ground: 100 % Linen

Embroidery: 59 % Linen,
36 % Viscose, 3 % Acrylic,
2 % Polyester

Width: 140 cm | Usable Width: 129 cm



Inspired by Polynesian bark paintings, this embroidered geometric pattern is created in several stages, some using special embroidery machines and some carried out by hand. The pure linen base material lends a natural character to the decorative fabric.

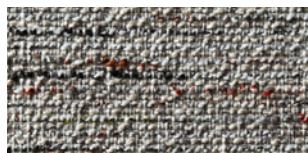
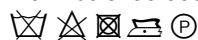
Domus | 10807

11 Colourways

29 % Viscose, 28 % Polyester,
16 % Cotton, 14 % Acrylic,
12 % Linen, 1 % Wool

Width: 145 cm

Martindale: 30.000



This very special furniture fabric demonstrates that true beauty does not shout from the rooftops. With its balanced surface texture, its seductive feel and its subtle hues, the sophistication and elegance of this textile creation are immediately clear, despite its unassuming appearance. 11 subtle colours make the decision far from easy.

Hidden Treasure | 10808

4 Colourways

Ground: 100 % Cotton

Embroidery: 60 % Cotton,
31 % Viscose, 9 % Polyester

Width: 146 cm | Usable Width: 128 cm



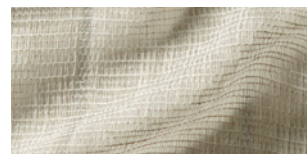
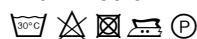
The modern embroidery on subtly shimmering cotton sateen reveals its sophisticated beauty only at second glance. Some of the colourful embroidery designs are applied on the bottom layer. At the end of the complicated manufacturing process, the fabric is cut in order to make these underlying designs visible. This results in a three-dimensional velvet effect, with surprise pops of colour.

Tesso Stripe | 10811

7 Colourways

90 % Polyester, 10 % Linen

Width: 295 cm



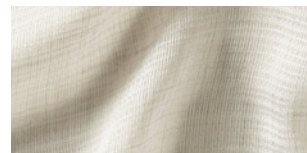
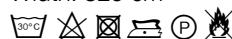
This double weave boasts a captivating feel and drape. The rhythm of the two-ply gridlike pattern is relieved at regular intervals by a subtle stripe effect.

Sorbet | 10812

15 Colourways

97 % Polyester, 3 % Wool

Width: 325 cm



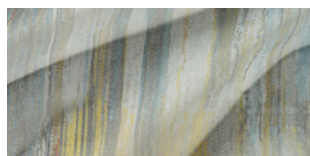
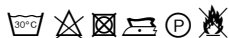
Sorbet truly lives up to its name, both in terms of colouring and in the wonderful softness of its drape. Delicate ice cream tones or mellow neutrals give an airy feel to the soft surface, fostering contemplative peace and balance. Thanks to its flame-retardant composition, this inbetween can be used anywhere.



ZIMMER+ROHDE

Coral | 10813

4 Colourways
77 % Polyester CS,
23 % Polyester
Width: 330 cm |
Usable Width: 310 cm



The *Coral* watercolour design evokes the depths of the sea and its phenomenal flora and fauna, where sunlight is refracted into the luminous shades of the underwater world. This ultralight, transparent fabric portrays the range of colours you would experience if you were to dive headfirst into the water.

Meandro | 10814

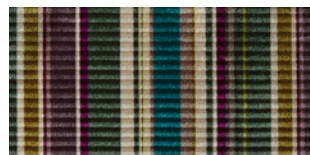
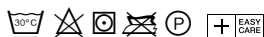
6 Colourways
56 % Polyester, 44 % Linen
Application: 100 % Polyester
Width: 310 cm
Usable Width: 256 cm



The appeal of this translucent decorative fabric lies in the process of manufacturing its ornamental diamond pattern. Using a special embroidery technique, elegant bands, woven in three colours, are applied to a length of half-linen the height of a room. This gives this relief design a lively, handcrafted appearance.

Infinity Stripe | 10815

6 Colourways
Ground: 100 % Polyester
Flor: 100 % Acrylic
Width: 149 cm
Usable Width: 144 cm
Martindale: 80.000



The colours of these modern, vertical velour stripes are intensified through a clever interplay with its horizontal relief look. This abstract interaction between colours and shadows opens up a new dimension in colour and room design. *Infinity Stripe* also combines all of the positive features of upholstery fabric: It is washable, easy to clean, hard-wearing and extremely light-fast. *Infinity Stripe* is available in colours that match those of the single-colour velour *Infinity Stripe*.

Suncoast | 10816

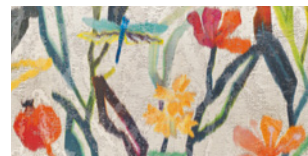
4 Colourways
50 % Polyester, 24 % Linen,
22 % Viscose, 4 % Lyocell
Width: 300 cm



Sunny colours and horizontal stripes with a metallic effect conjure up that holiday feeling at your window. Its light, airy quality evokes an abstract landscape painting that affords a sweeping view of the distant horizon.

Wonderland | 10817

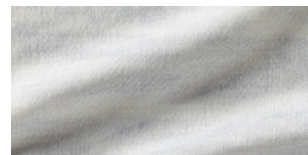
3 Colourways
40 % Viscose, 35 % Polyester,
25 % Linen
Width: 140 cm



Years ago, artists such as Henri Rousseau dreamed of magical gardens in exotic lands, without themselves having ever seen them. In their paintings, they gave free rein to their imaginations. *Wonderland*, too, depicts a mythical landscape, where dragonflies perch on reeds and delicate blossoms nestle together. Its warp print accentuates the vibrancy of the pattern; the grass seems to be gently swaying in a balmy summer breeze.

Marino | 10818

5 Colourways
59 % Cotton, 41 % Polyester
Width: 300 cm



The fine digital print, delicately coloured against a semi-transparent background, gives the illusion of rippling water or the soft texture of a sandy beach. Featuring an abstract play on colours, this high-quality cotton fabric has a wide variety of potential applications.



ZIMMER+ROHDE

Perfect Performance – Indoor design meets outdoor function

Those in search of the latest exciting interior design trends will find them outdoors – there is more happening out on terraces, in gardens and at home spas than in any other private residential space at the moment. Entirely new design concepts can be created on the basis of textile innovations that combine the finest fabric care qualities and weather-resistant durability. The Zimmer + Rohde design team aimed to do just that, and searched around the world for high-quality new products with the visual appeal of indoor fabrics and the ability to withstand conditions outdoors. This gave rise to the Sun Lounge collection, a line that includes fabrics which can be integrated into all private living spaces.

Stefan Gabel, Head of Design at Zimmer + Rohde, explains the concept behind this outdoor line as follows: “Advanced technical options allow outdoor design ideas to meet the aesthetic standards of indoor design. Outdoor furniture is becoming more comfortable, outdoor accessories are becoming more diverse and outdoor textiles are becoming more appealing to the sight

and touch. Our goal is to use our outdoor line to soften the boundaries between indoor and outdoor areas, creating an elegant, sophisticated total living concept.”

Inspired by the lively stripes on traditional kelim carpets, CURACAO combines a colourful, cosy feel with impressive functional properties. Meanwhile, a woven Jacquard relief made from bouclé yarns lends GOBI an elegant ‘indoor’ texture. LIBECCIO is similarly surprising, what with its innovative knitted look. Thanks to its slightly elastic composition, this fabric is very well suited to loose upholstery and casually strewn cushions. Finally, LEVANTE is a synthetic leather with a natural-looking grain and earthy colour palette, which make it the ideal basis for any interior design concept.

All of the fabrics in this line consist of high-quality, hypoallergenic synthetic fibres. They are washable and resistant to soiling, light and UV damage as well as to discolouration from chlorinated water, saltwater and sunscreen.

The product properties of the Sun Lounge collection

Perfect Performance: ‘Easy Care’ fabrics perfectly suitable for indoor and outdoor use



- High lightfastness
- Weather-resistant
- Good abrasion-resistance when both wet and dry
- Hypoallergenic
- Dirt-resistant
- Colour does not fade if material comes into contact with chlorinated substances, salt water or sunscreen
- Washable at 30°C gentle wash

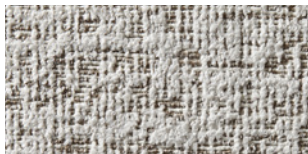
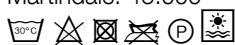


ZIMMER+ROHDE

Outdoor Collection SUN LOUNGE

Gobi | 10792

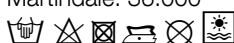
8 Colourways
100 % Polypropylene
Width: 138 cm
Martindale: 45.000



The sandy grains of a desert landscape were the inspiration for this woven Jacquard relief, an easy-care and hard-wearing upholstery fabric specially developed for both indoor and outdoor use. The feel of the bouclé yarn is pleasantly soft.

Libeccio | 10802

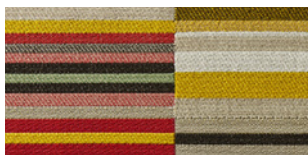
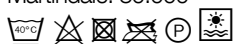
11 Colourways
100 % Polypropylene
Width: 146 cm
Martindale: 36.000



Libeccio, with its innovative knitted look, is slightly elastic and thus very well suited to loose upholstery and casually strewn cushions. Stain- and light-resistant, *Libeccio* enriches any lounging area, whether indoors or out.

Curacao | 10800

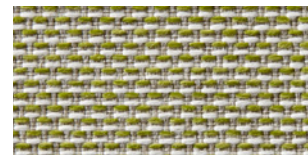
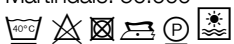
4 Colourways
100 % Polypropylene
Width: 141 cm
Martindale: 30.000



Inspired by the bright stripes of traditional kilim rugs, *Curacao* particularly stands out for its expressive combinations of colours. Thanks to its practical features, this colourful fabric can add touches of freshness to all living areas, both inside and out.

Tonga | 10803

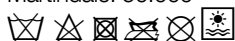
10 Colourways
100 % Polypropylene
Width: 139 cm
Martindale: 50.000



Tonga: a basic with a little added luxury. The finely textured upholstery fabric for indoors and out plays with a two-tone woven texture, resulting in a regular, attractively grainy appearance. Eight welcoming colours ensure simple upholstery for chairs, benches and sofas, whether in the sunroom at a spa or on the terrace.

Levante | 10801

9 Colourways
85 % Polyvinylchlorid,
15 % Polyester
Width: 137 cm
Martindale: 50.000



This artificial leather with a realistic grain was developed for use both indoors and out. With its range of colours in classic leather tones, whole worlds of colour can be created, whether in harmony with natural shades or as a neutral basis for brightly coloured cushions.



ZIMMER+ROHDE

Light fabrics. Soft tones.

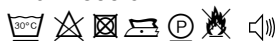
The new Zimmer + Rohde acoustic fabrics deliver transparency in every possible way: For the first time in the Zimmer + Rohde collection, transparent fabrics also ensure that sounds are clear, transparent, and soft. The elegant, lightweight feel of this new product provides excellent acoustics and adds a whole new interior design dimension. Modern architecture is characterised by smooth surfaces, such as glass, concrete and metal, which have adverse effects on ambient sound. Transparent acoustic fabrics skilfully combat this issue as they actively regulate and lower noise volume by absorbing echoes. At the same time, they allow light through, ensure privacy and are therefore an attractive design element, both in homes and professional work spaces. Zimmer + Rohde's acoustic fabrics increase the sense of well-being, bestow tranquillity and combine function and aesthetics in perfect harmony.

Zimmer + Rohde acoustic collection: An audio-visual experience.

- Three transparent and five opaque fabrics for perfect room acoustics
- Unpleasant echoes are absorbed at a rate of up to 80 %
- The perfect balance for modern, echoey architecture made out of concrete, glass and metal
- New design possibilities thanks to transparent qualities
- Increases the sense of well-being and tranquillity
- Offers privacy and functions perfectly as a partition
- Flame retardant and therefore great for the home, as well as in offices, hotels and restaurants
- Some products available with sun reflection function
- All products have been tested and certified

Mute | 10805

10 Colourways
100 % Polyester Trevira CS
Width: 300 cm



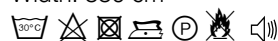
The restrained, matt satin surface of *Mute* gives it a modern, yet elegant look. Thanks to the use of specially developed yarns and an innovative fabric construction, this light, single-colour material noticeably improves the acoustics of homes, offices or hotel rooms despite its high transparency.

The soft mixture of yarns in *Silence* – sun-reflective and effective against noise – has a natural and elegant appearance. This homely design creates an especially pleasant atmosphere in the room, both in private and public spheres.

Flame-retardant, sound-absorbent, sun-reflective

Sonic | 10810

3 Colourways
94 % Polyester CS,
6 % Polyester
Width: 330 cm



Sonic, with its modern weave structure in today's sought-after mesh look, is a pioneer in more than just appearance. It has also been proven to improve the acoustics of a room, and its light-reflective backing protects against intense sunlight.

Flame-retardant, sound-absorbent, sun-reflective

Silence | 10809

7 Colourways
91 % Polyester CS,
9 % Polyester
Width: 330 cm

