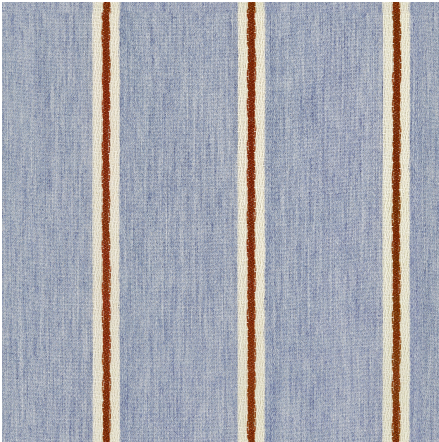




ZIMMER+ROHDE








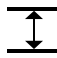
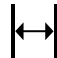

Product data sheet

With a broad weave, SAINT-TROPEZ boasts graceful tennis stripes and offers both indoor and outdoor technical properties.

Its resistance to chlorinated and salt water, along with its excellent color fastness in both sunlight and bad weather, bears witness to the performance of this beautiful stripe. The weft yarns are delicately mottled and it is as soft as cashmere to the touch. SAINT-TROPEZ is so natural that decorators of refined interiors and exteriors will be unable to resist its charm.

Etamine

Saint-Tropez

ARTICLENUMBER	19609534
COLLECTION	Heures d'été
NUMBER OF COLORS	6
CATEGORY	Fabrics
MOTIVE	Stripes
FABRIC WIDTH	300 cm
EFFECTIVE WIDTH	-
WEIGHT	59 g/m ²
MATERIAL	100% Acrylic
MARTINDALE	-
CARE INSTRUCTIONS	    
ADDITIONAL INFORMATION	-
PROPERTIES / USAGE	Room high washable   
ACOUSTIC PROTECTION	-
LIGHT FASTNESS (EN ISO 105-B02)	7 - 8
DYEING METHOD	-
PILLING (EN ISO 12945-2)	-
RAPPORTWIDTH	8 cm
RAPPORTHEIGHT	-
MANUFACTURING METHOD	-